

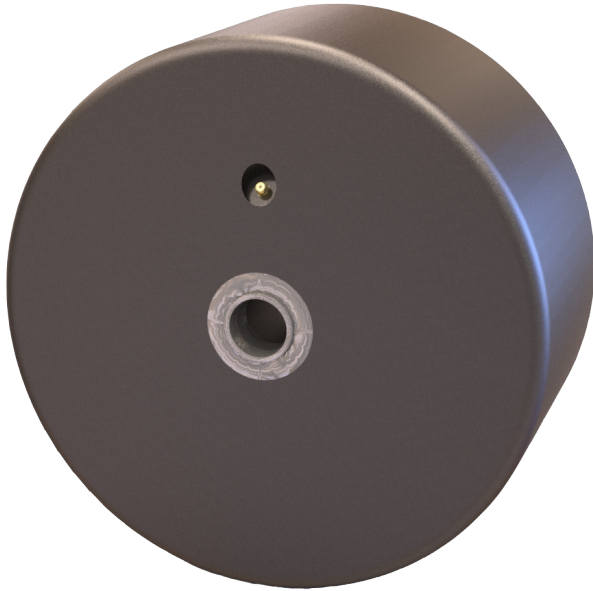


NYTEC-MD WHEELS

9,360 LBS maximum capacity

NYTEC-MD WHEELS

WHEELS



FEATURES

NyTec-MD is a nylon filled material which provides a high load capacity, floor protective wheel. Wheel capacities approach those of similar cast iron and steel wheels. Nytec-MD material is resistant to most harsh environments. The non-abrasive and vibration dampening material actually provides a quieter operation when compared to steel or cast iron wheels. When used in wet environments, plain bore NyTec-MD wheels can be used as the material is self lubricating. NyTec wheels are offered with precision tapered, precision ball, and straight roller bearings. For special applications, contact the factory.

WHEEL				PART NUMBER			CAPACITY
Dia.	Width	Hub Length	Bore	Roller	Ball	Tapered	Capacity
3	2.19	2 7/16	1/2	03201-39-12	03202-39-08	03209-39-08	1,560
3	3.25	3 1/2	1	03301-39-16*		03309-39-16	2,340
3	3.25	3 1/4	1 1/4	03301-39-20			2,340
3	4.25	4 1/2	3/4		03402-39-12	03409-39-12	2,340
3	4.25	4 1/2	1			03409-39-16	3,120
4	2.19	2 7/16	1/2	04201-39-12	04202-39-08	04209-39-08	2,080
4	3.25	3 1/2	3/4		04302-39-12	04309-39-12	3,120
4	3.25	3 1/2	1	04301-39-16*		04309-39-16	3,120
4	3.25	3 1/2	1 1/4	04301-39-20*		04309-39-20	3,120
4	4.25	4 1/2	3/4		04402-39-12	04409-39-12	4,160
4	4.25	4 1/2	1		04402-39-16	04409-39-16	4,160
4	4.25	4 1/2	1 1/4	04401-39-20*	04402-39-20	04409-39-20	4,160
4	4.25	4 1/4	1 1/2	04401-39-24			4,160



NYTEC-MD WHEELS 9,360 LBS

WHEEL				PART NUMBER			CAPACITY
Dia.	Width	Hub Length	Bore	Roller	Ball	Tapered	Capacity
6	2.19	2 7/16	1/2	<u>06201-39-12</u>	<u>06202-39-08</u>	<u>06209-39-08</u>	3,120
6	3.25	3 1/2	3/4		<u>06302-39-12</u>	<u>06309-39-12</u>	4,680
6	3.25	3 1/2	1	<u>06301-39-16*</u>	<u>06302-39-16</u>	<u>06309-39-16</u>	4,680
6	3.25	3 1/2	1 1/4	<u>06301-39-20*</u>	<u>06302-39-20</u>	<u>06309-39-20</u>	4,680
6	4.25	4 1/2	1		<u>06402-39-16</u>	<u>06409-39-16</u>	6,240
6	4.25	4 1/2	1 1/4	<u>06401-39-20*</u>	<u>06402-39-20</u>	<u>06409-39-20</u>	6,240
6	4.25	4 1/4	1 1/2	<u>06401-39-24</u>			6,240
6	5.25	5 1/2	1		<u>06502-39-16</u>	<u>06509-39-16</u>	7,800
6	5.25	5 1/2	1 1/4	<u>06501-39-20*</u>	<u>06502-39-20</u>	<u>06509-39-20</u>	7,800
6	5.25	5 1/4	1 1/2	<u>06501-39-24</u>			7,800
8	2.19	2 7/16	1/2	<u>08201-39-12</u>	<u>08202-39-08</u>	<u>08209-39-08</u>	4,160
8	3.25	3 1/2	3/4		<u>08302-39-12</u>	<u>08309-39-12</u>	6,240
8	3.25	3 1/2	1	<u>08301-39-16*</u>	<u>08302-39-16</u>	<u>08309-39-16</u>	6,240
8	3.25	3 1/2	1 1/4	<u>08301-39-20*</u>	<u>08302-39-20</u>	<u>08309-39-20</u>	6,240
8	4.25	4 1/2	1		<u>08402-39-16</u>	<u>08409-39-16</u>	8,320
8	4.25	4 1/2	1 1/4	<u>08401-39-20*</u>	<u>08402-39-20</u>	<u>08409-39-20</u>	8,320
8	4.25	4 1/4	1 1/2	<u>08401-39-24</u>			8,320
8	5.25	5 1/2	1		<u>08502-39-16</u>	<u>08509-39-16</u>	10,400
8	5.25	5 1/2	1 1/4	<u>08501-39-20*</u>	<u>08502-39-20</u>	<u>08509-39-20</u>	10,400
8	5.25	5 1/4	1 1/2	<u>08501-39-24</u>			10,400
10	3.25	3 1/2	3/4		<u>10302-39-12</u>	<u>10309-39-12</u>	7,800
10	3.25	3 1/2	1	<u>10301-39-16*</u>	<u>10302-39-16</u>	<u>10309-39-16</u>	7,800
10	3.25	3 1/2	1 1/4	<u>10301-39-20*</u>	<u>10302-39-20</u>	<u>10309-39-20</u>	7,800
10	4.25	4 1/2	1		<u>10402-39-16</u>	<u>10409-39-16</u>	10,400
10	4.25	4 1/2	1 1/4	<u>10401-39-20*</u>	<u>10402-39-20</u>	<u>10409-39-20</u>	10,400
10	4.25	4 1/4	1 1/2	<u>10401-39-24</u>			10,400
10	5.25	5 1/2	1		<u>10502-39-16</u>	<u>10509-39-16</u>	13,000
10	5.25	5 1/2	1 1/4	<u>10501-39-20*</u>	<u>10502-39-20</u>	<u>10509-39-20</u>	13,000
10	5.25	5 1/4	1 1/2	<u>10501-39-24</u>			13,000
12	3.25	3 1/2	3/4		<u>12302-39-12</u>	<u>12309-39-12</u>	11,440
12	3.25	3 1/2	1	<u>12301-39-16*</u>	<u>12302-39-16</u>	<u>12309-39-16</u>	11,440
12	3.25	3 1/2	1 1/4	<u>12301-39-20*</u>	<u>12302-39-20</u>	<u>12309-39-20</u>	11,440
12	4.25	3 1/2	1		<u>12402-39-16</u>	<u>12409-39-16</u>	12,480
12	4.25	3 1/2	1 1/4	<u>12401-39-20*</u>	<u>12402-39-20</u>	<u>12409-39-20</u>	12,480
12	4.25	3 1/4	1 1/2	<u>12401-39-24</u>			12,480
12	5.25	5 1/2	1		<u>12502-39-16</u>	<u>12509-39-16</u>	15,600
12	5.25	5 1/2	1 1/4	<u>12501-39-20*</u>	<u>12502-39-20</u>	<u>12509-39-20</u>	15,600
12	5.25	5 1/2	1 1/2	<u>12501-39-24</u>			15,600
12	6.25	6 1/2	1		<u>12602-39-16</u>	<u>12609-39-16</u>	18,720
12	6.25	6 1/2	1 1/4		<u>12602-39-20</u>	<u>12609-39-20</u>	18,720

* These wheels have .25 shorter hub length.