

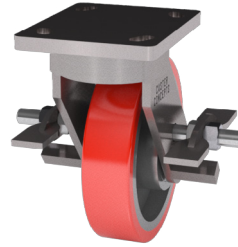


BRAKE TYPES



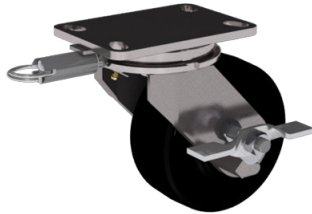
Cam (C)

The cam brake is used on lighter duty casters. This brake provides an efficient, cost-effective hub braking system.



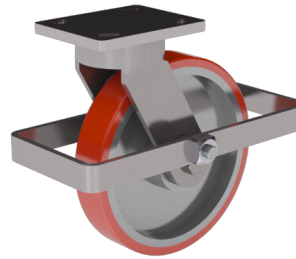
Dual Side (DS)

The dual side brake is a cost-effective hub brake. Each brake lever must be engaged by the operator.



Single Side (SS)

The single-side brake is an economical brake for medium heavy-duty casters with 6 to 12 inch diameter wheels.



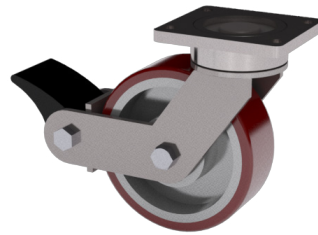
Wrap Around (W)

The wrap around brake provides total access to the braking system regardless of the caster orientation.



Face Contact (F)

The face contact brake is activated by tightening the brake shoe against the wheel.



Poly Lock (P)

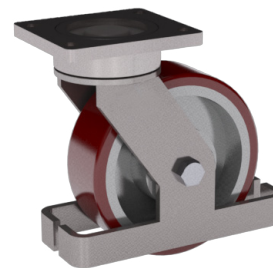
A polyurethane lock roller engages a steel brake shoe against the tread of the wheel providing positive engagement of the tread. Levers can be mounted "toe out" (shown) or reversed to "toe in."



Pneumatic Poly Cam (PP)

Similar to the standard poly cam brake in operation, the pneumatic poly cam brake offers a greater movement of the brake shoe to compensate for pneumatic tires. The brake is foot operated.

MISCELLANEOUS OPTIONS



Toe Guard (TG)

The toe guard is mounted approximately one half of an inch off the floor to help protect workers' feet. It can be used in both manual and power applications.